



**BISEP™**

STATS BISEP™ takes line stop to the next generation. Traditional hot tap and line stop technology utilises a single cup seal isolation per hot tap penetration. This design offers limited sealing on poor surface conditions and has no integral seal test or verification. The BISEP™ is a Branch Installed Self-Energised Plug (patent pending) with dual compression seals and an annular bleed providing high integrity dual seal isolation.

The BISEP™ is deployed through a single full bore branch or hot tap penetration and hydraulically set in the pipe. Its dual compression seals are more compliant and have a far higher success rate than traditional cup seals when sealing poor condition pipe bores. Using the annular bleed port verifies the seal has 100% integrity before any intervention work begins. This also provides a monitoring facility when work is ongoing. Line pressure acting against the tool pressure head maintains seal pressure creating a fail-safe feature providing actuation independent of the hydraulic system. The ejection load resistance is provided by the tool's deployment head.



18" 300# BISEP™

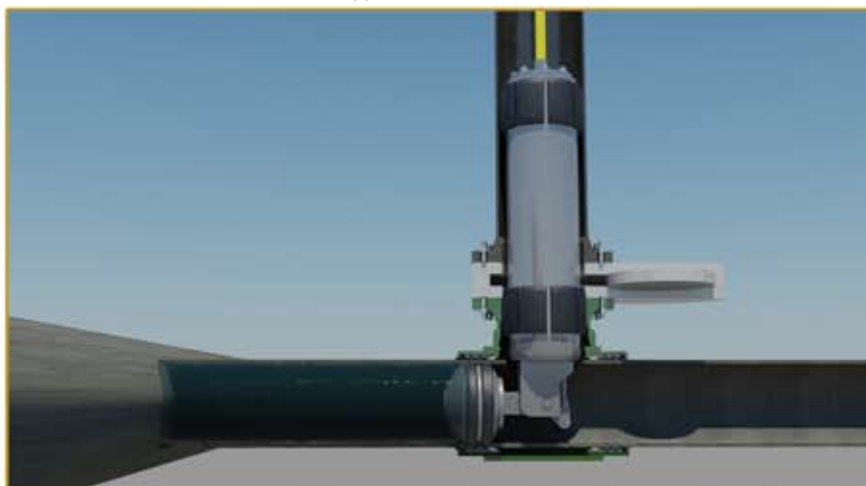


18" 300# Hot Tap & BISEP™

Key Features:

- Verified high integrity dual seal isolation
- Annular bleed port proves and monitors the seal integrity before and during any intervention work
- Higher sealing success rate than traditional cup seal technology
- Single point intervention
- Can be deployed through conventional tee/ clamp /branch
- Uses line pressure as a fail-safe to maintain seal pressure
- Size range: 3"– 36"
- Pressure range: up to 150 bar (+2100psi)

Typical Installation



Hot Tapping complete and BISEP™ inserted and set in position.

BISEP™ is a Trade Mark of STATS (UK) Limited